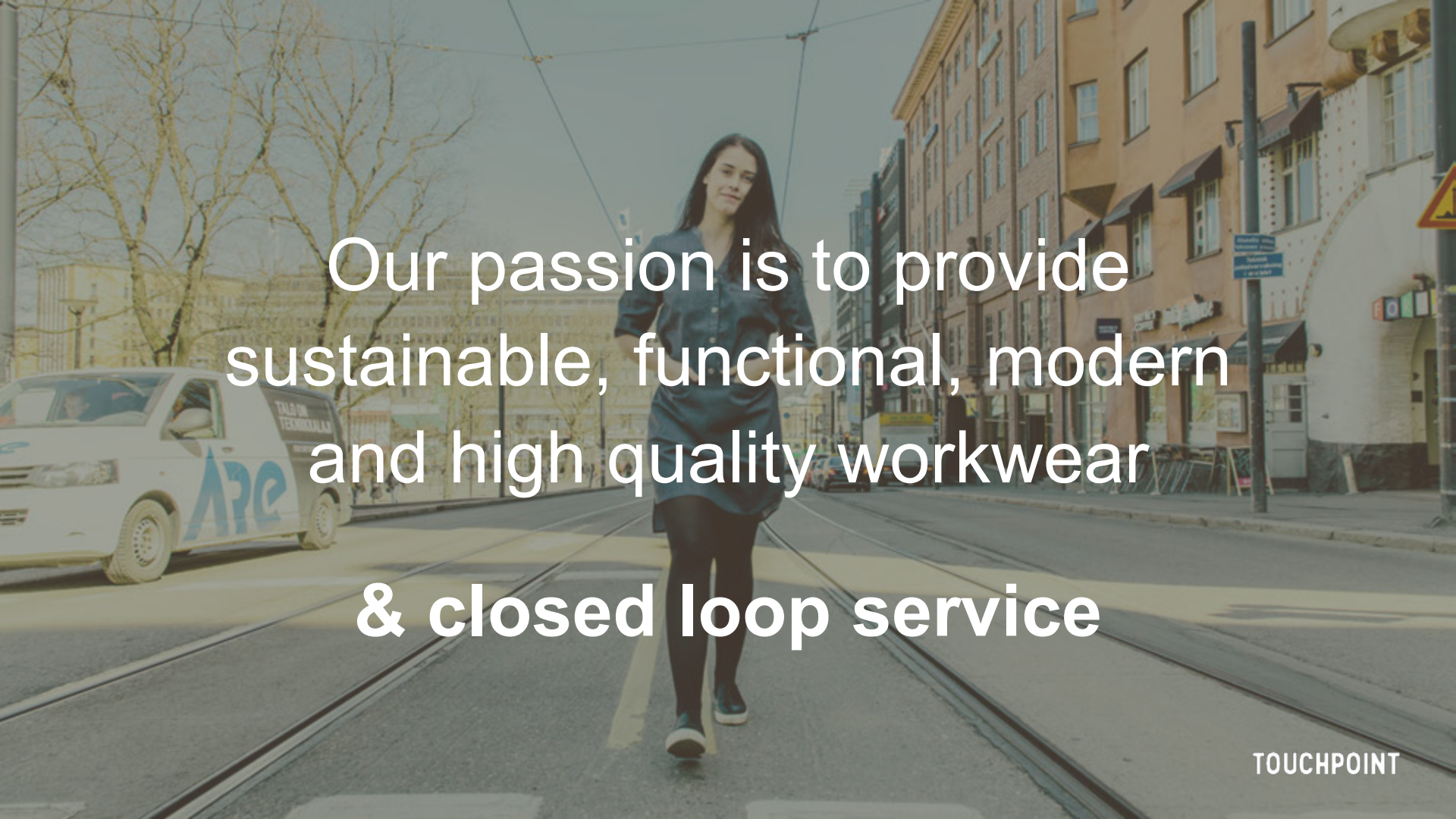


# TOUCHPOINT

Sustainable Workwear



Our passion is to provide  
sustainable, functional, modern  
and high quality workwear  
& closed loop service

TOUCHPOINT

# Take a seat at a table that's made from textile waste



- A fast-food chain operating in Finland, Russia & Baltics.
- TouchPoint has provided already 3 workwear collections for the company's 6000 employees during our 10 year collaboration.
- The latest collection delivered in spring 2019 was "platinum" level in terms of sustainability: all items in the collection are made from sustainable and ecological materials – from T-shirts to belt buckles.
- Closing the loop - old Hesburger workwear is turned in outdoor furniture for the restaurants.





# RESTER LTD.

Closed-loop business model  
for textile waste streams



# RESTER IN A NUTSHELL

## Why

\* To solve the most critical problem faced by the textile industry today – waste utilization. Textiles are massively underutilized, and the footprint extends beyond the use of raw materials.

## Who

Our team has vast experience and proven track records in B-2-B business, deep understanding in value-chains and technology

## How

\* By combining innovative material flow management with the latest technology.

\* Creating new business models with collaboration across the entire value-chain.

A large pile of trash, including plastic bags, cardboard, and other debris, is shown. In the background, a yellow skid steer loader with the number '755K' is visible. The scene is outdoors, possibly at a waste transfer station or landfill.

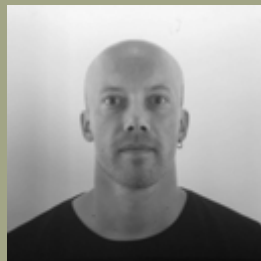
**Uh Houston,  
we have a problem  
It's global - and local!**

# WHO? MEET OUR TEAM



**OUTI LUUKKO**

Co-founder, partner &  
CEO  
Touchpoint Ltd.



**JUKKA PESOLA**

Co-founder & Partner  
Pure Waste Ltd



**ALI HARLIN**

Professor, VTT  
Founder  
Infinite Fibre Company



**OSKAR ENGBLOM**

Partner  
Ilmakunnas Ltd.

# RESTER LTD

# WE FOCUS ON WASTE

Focus in B-2-B segment

Closed-loop solution for  
domestic textile waste



Environmental impact –  
Co2 savings

Goal = Zero waste

What goes out, will return as  
new raw material.

Added value vs incineration



# What are we expecting to receive

## COTTON

\* High value stream for respinning and value-added fibre blends

## MISC.

\* Wool, acrylics and other monomers.



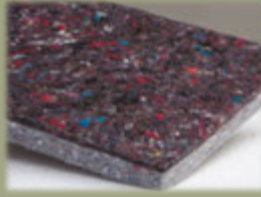
## MIXED

\* Largest stream in B-2-B sector.  
\* Existing market with tremendous growth potential

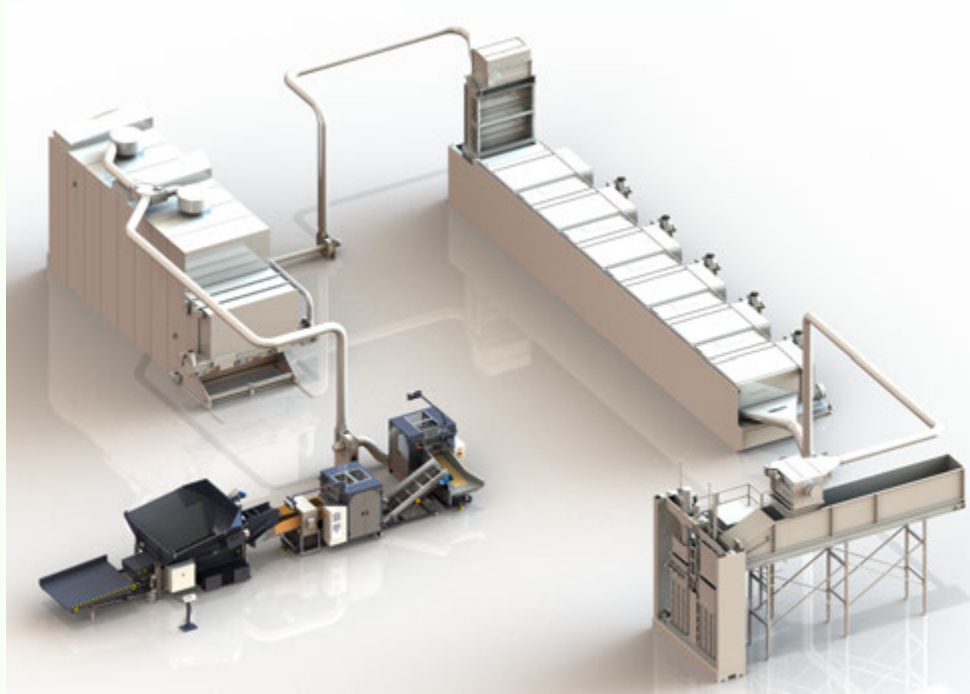
## POLYESTER

\* Globally high demand of clean and homogeneous streams.  
\* Easily re-processable

# What are expecting to do with it

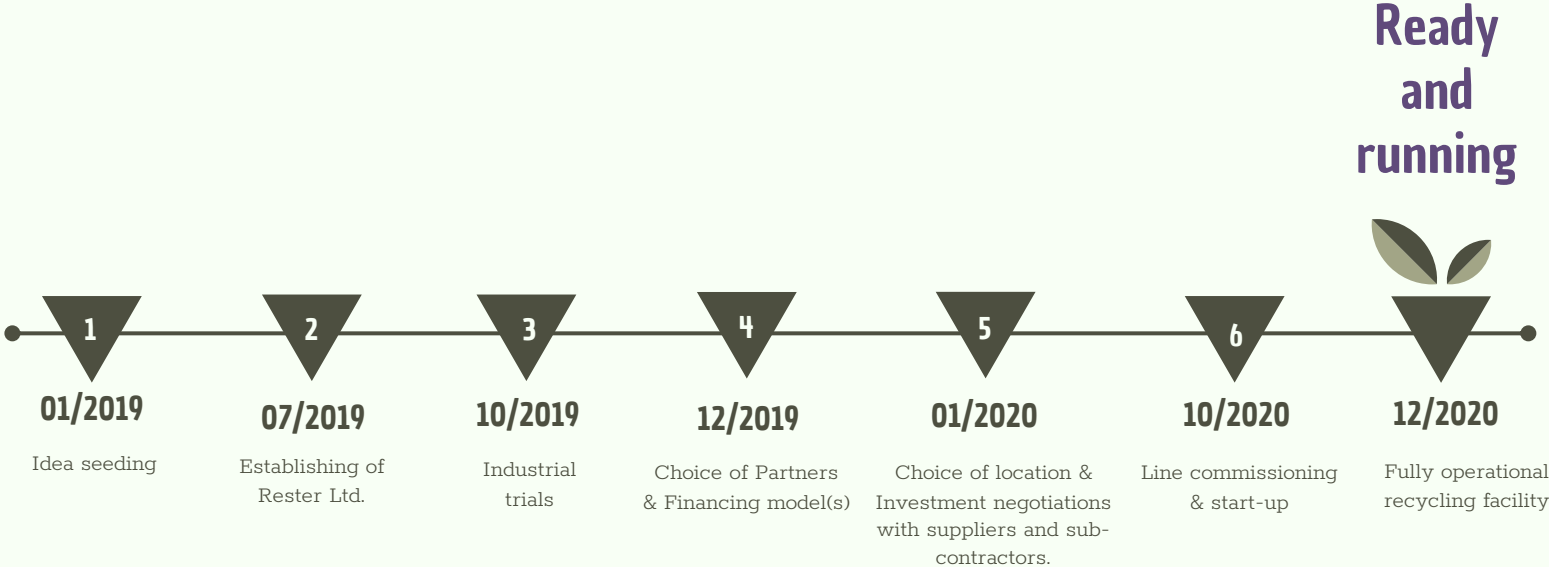


# RESTER PRODUCTION FACILITY - PHASE 1



Waste Feeding – Cleaning – Blending – Opening – Blending – Baling of New Rawmaterial

# TIMELINE FOR PHASE ONE



# ELIMINATING WASTE AND THE CONTINUAL USE OF RESOURCES



## CIRCULARITY WITH PARTNERS

Rester has an innovative and scalable closed-loop solution to tackle the ever-growing problem of textile waste and side-streams created by the industry.



## SUSTAINABILITY SUPPORTED BY POLICIES?

Sustainability is the new black — our solution is based on quality and the most lean and clean process solutions.

**POLICIES NEEDED TO HELP  
US TO MAKE THIS HAPPEN?**

**THANK YOU FOR YOUR ATTENTION!**



**hello@rester.fi**