



ICCAP

INCLUSIVE CLIMATE FINANCE FOR VULNERABLE
COMMUNITIES IN ASIA PACIFIC

Project timeline: 2024-2029

PROJECT OVERVIEW AND OUR GOALS

The **Inclusive Climate Finance for Vulnerable Communities in the Asia-Pacific (ICCAP)** project is funded by the **International Climate Initiative (IKI)** and is being implemented from **2024 to 2029**. It is designed to **enhance economic, social, and environmental resilience** in vulnerable regions across Asia and the Pacific by **channelling national and international public and private climate adaptation finance flows to vulnerable communities and marginalised groups** affected by climate change.

It supports the development and scaling of green financial products that are aligned with countries' Nationally Determined Contributions (NDCs) and meet the needs of rural smallholders and climate-vulnerable populations, including women, Indigenous Peoples, persons with disabilities, and those who are economically and socially excluded.

Grounded in a strong commitment to inclusion and equity, ICCAP promotes locally led solutions, strengthens private sector engagement, and supports climate-resilient, sustainable development across the Asia-Pacific region.

ICCAP is focused on advancing **climate adaptation** by achieving a **triple bottom line**:



By expanding access to **inclusive, adaptation-focused financial services**, the project aims to enable vulnerable communities to invest in practical, climate-resilient solutions. These investments will, then, be able to strengthen local adaptive capacity and long-term resilience to the impacts of climate change.

FOCUS AREAS AND KEY INTERVENTIONS



Policy Analysis, Cooperation, and Engagement

Objective

To create an enabling environment for inclusive green finance by identifying policy gaps, promoting best practices, and strengthening policymaker capacity across Asia-Pacific.

Scope

The project will undertake an in-depth analyses of policy and regulatory frameworks to support adopting inclusive climate finance policies. It will produce evidence-based, gender-responsive policy recommendations, best practices in green finance, and stakeholder engagement strategies to ensure that climate finance systems are inclusive, locally grounded, and responsive to the needs of vulnerable communities.

Stakeholders

National and local governments, financial regulators, private sector stakeholders, and civil society organizations.



Capacity Development for Financial Service Providers

Objective

To support financial service providers (FSPs) in delivering client-centric green financial products tailored to the needs of vulnerable populations.

Scope

The project will offer technical assistance to at least 14 FSPs across six countries, enabling them to design, pilot, and scale inclusive green credit products. It will help FSPs align with sustainability principles, improve investment readiness, and build systems for tracking the performance of their green finance portfolios.

Stakeholders

FSPs and their clients, as well as green technology providers, investors, and policymakers who support inclusive finance innovation.



Regional Adaptation Investment Facility (RAIF)

Objective

To catalyse private investment in local climate adaptation strategies by establishing a regional finance platform.

Scope

The project will establish the RAIF—an innovative facility that channels public and private capital for climate adaptation through FSPs. It will back instruments like blended finance, hedging, and green bonds, with a flexible design to adapt to markets and scale long-term resilience investments.

Stakeholders

Institutional investors, development banks, national governments, and FSPs seeking to expand their adaptation finance offerings.

FOCUS AREAS AND KEY INTERVENTIONS



Multi-Stakeholder Action Labs (MALs)

Objective

To co-create locally relevant, innovative, and bankable adaptation solutions in partnership with communities and climate finance pipeline stakeholders.

Scope

The project will pilot six Multi-stakeholder Action Labs using a participatory, beneficiary-centred approach to develop and test innovative and needs-responsive adaptation solutions. These labs will bring together climate-vulnerable communities and marginalised groups, private sector actors, policymakers, and technical experts. The co-developed adaptation solutions will be linked to financial products designed by FSPs and scaled through financing catalysed by the RAIF.

Stakeholders

Local climate-vulnerable communities and marginalized groups, FSPs, local policymakers, technical experts, and private sector actors.



Gender Equity and Social Inclusion (GESI)

Objective

To ensure that all ICCAP activities are inclusive and responsive to the needs of marginalised and climate-vulnerable populations.

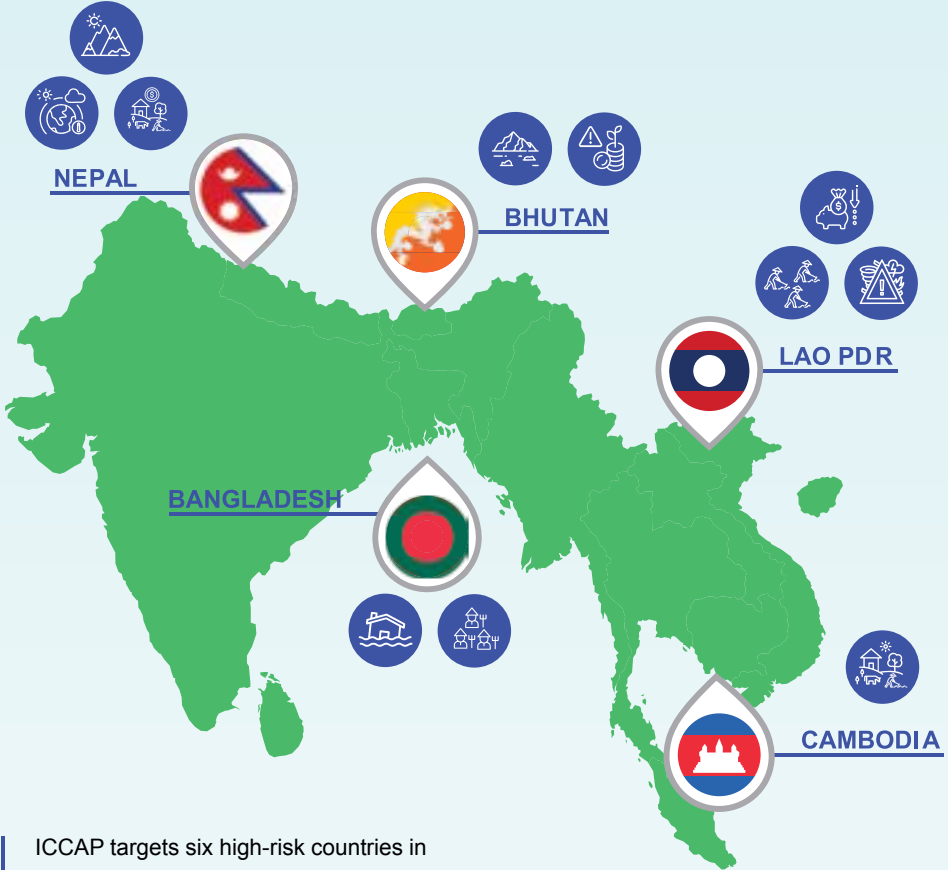
Scope

The project will mainstream GESI across the project by applying intersectional analysis, integrating inclusive MEL frameworks, and supporting gender-responsive financial design. It will help ensure ICCAP advances inclusive climate finance through the development of GESI toolkits, capacity strengthening for FSPs and partners, and implementation of a gender-transformative pilot that addresses root causes of financial exclusion by co-developing financial solutions at the local level.







Stakeholders

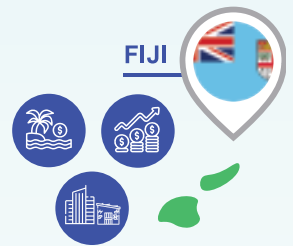
Historically marginalised groups (including women, Indigenous Peoples, ethnic minorities, persons with disabilities), FSPs, local stakeholders, civil society organisations, and ICCAP implementing partners.

WHERE WE WORK






ICCAP targets six high-risk countries in Asia-Pacific, selected for their climate vulnerability and urgent need for adaptation finance:

-  **Bangladesh**
-  **Bhutan**
-  **Cambodia**
-  **Lao PDR**
-  **Nepal**
-  **Fiji**



WHO WE SUPPORT

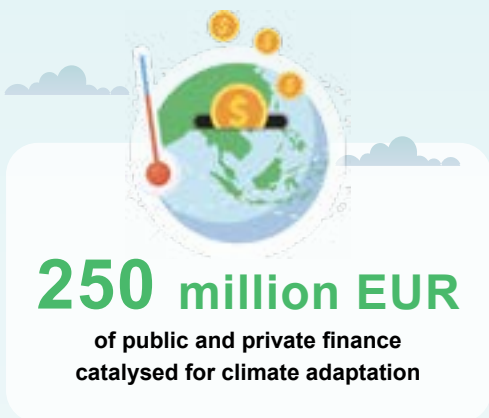
Beneficiaries:

-  Low-income, rural, and climate-vulnerable communities
-  Women, Indigenous Peoples, and persons with disabilities
-  Those reliant on natural resources for food security and livelihoods

Climate Finance Stakeholders:

-  Financial service providers (FSPs)
-  Government agencies, ministries, and central banks
-  Institutional investors (public, private, and impact investors)
-  Green technology service providers
-  Civil society organisations

TARGET IMPACT AT A GLANCE



PROJECT PARTNERS



Stockholm Environment Institute (SEI) - Lead Partner

An international non-profit research institute promoting sustainable development.



Appui au Développement Autonome (ADA)

Based in Luxembourg, supporting inclusive finance and local economic development.



Asia-Pacific Rural and Agricultural Credit Association (APRACA)

Regional platform advancing rural finance and inclusion across Asia-Pacific.

CONTACT

For updates, insights, and partnership opportunities, stay connected with us.



cfs@sei.org



www.sei.org/iccap/



SEI Asia – Stockholm Environment Institute

<https://www.linkedin.com/company/sei-asia-stockholm-environment-institute/>



ADA - Appui au Développement Autonome

www.linkedin.com/company/ada-asbl/



APRACA Secretariat

www.linkedin.com/in/apraca-secretariat-87b9291b0/