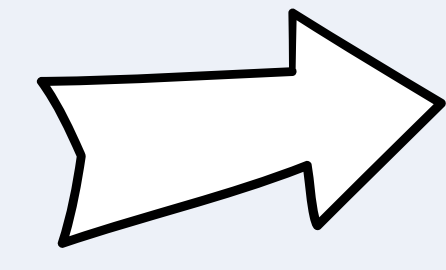
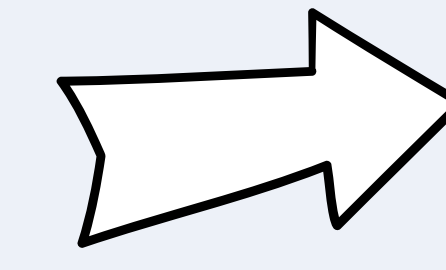


Project overview: FOCI* - Providing new evidence to mitigate SLCPs and decision-making

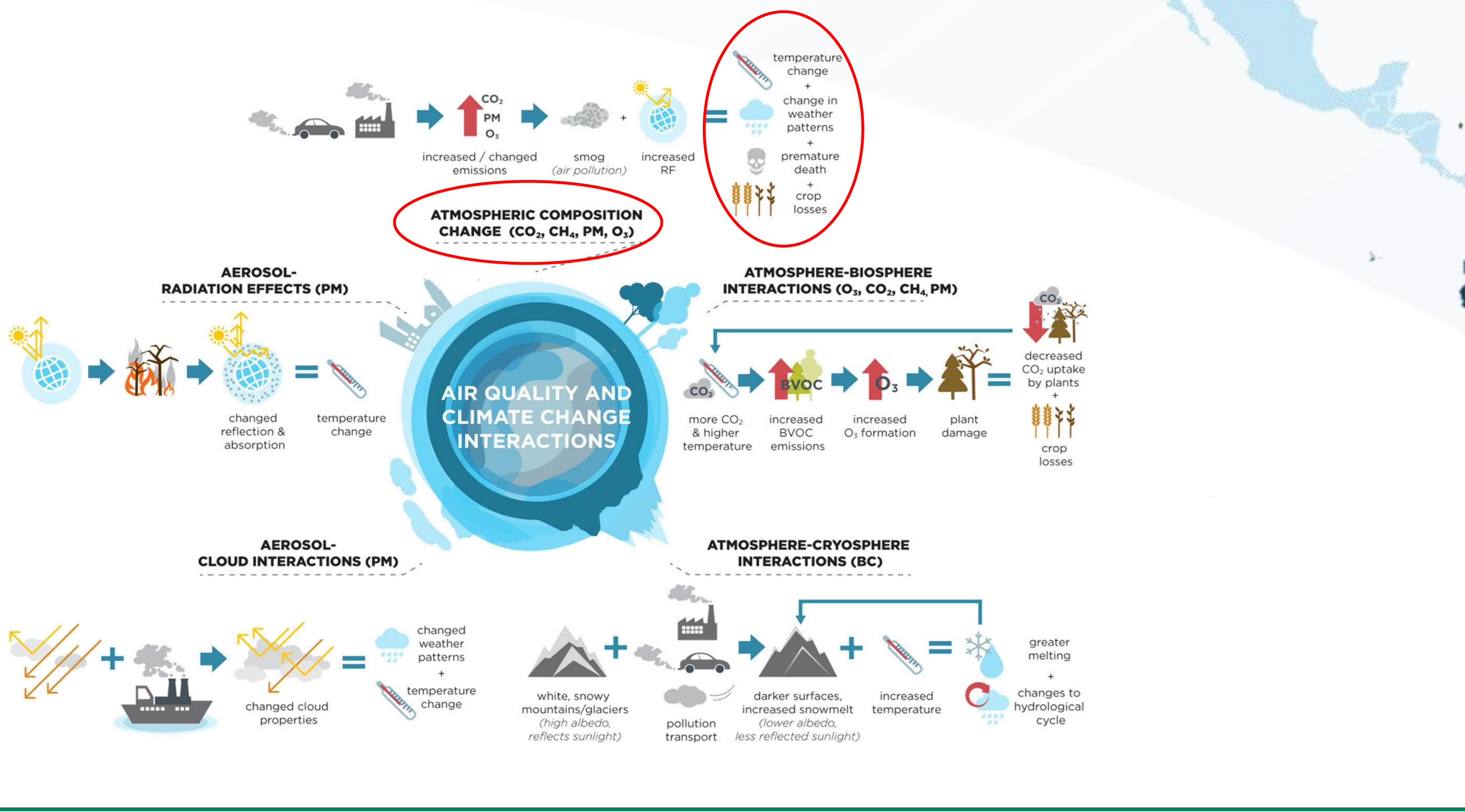
To assess the impact of key radiative forcers, where and how they arise, and the processes of their impact on the climate system.



A key stage is developing historical emission estimations and future projections **Latin America**, in key emitting sectors – energy and non-energy –.



Support the development of **policy recommendations** by bridging **knowledge gaps** on the impact of non-CO₂ climate forcing pollutants

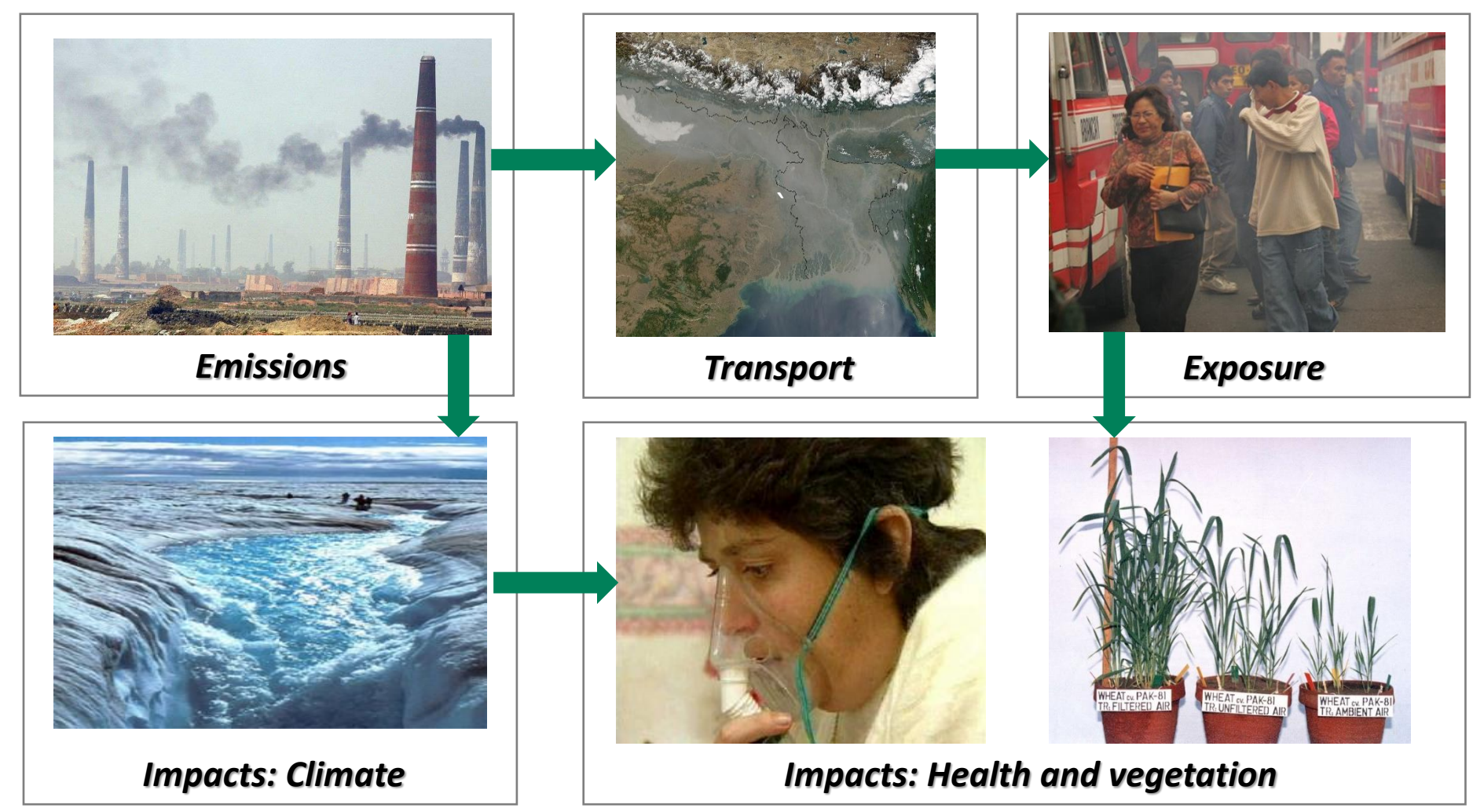


- Avoided deaths**
- Reduction in crop loss**
- Temperature response**

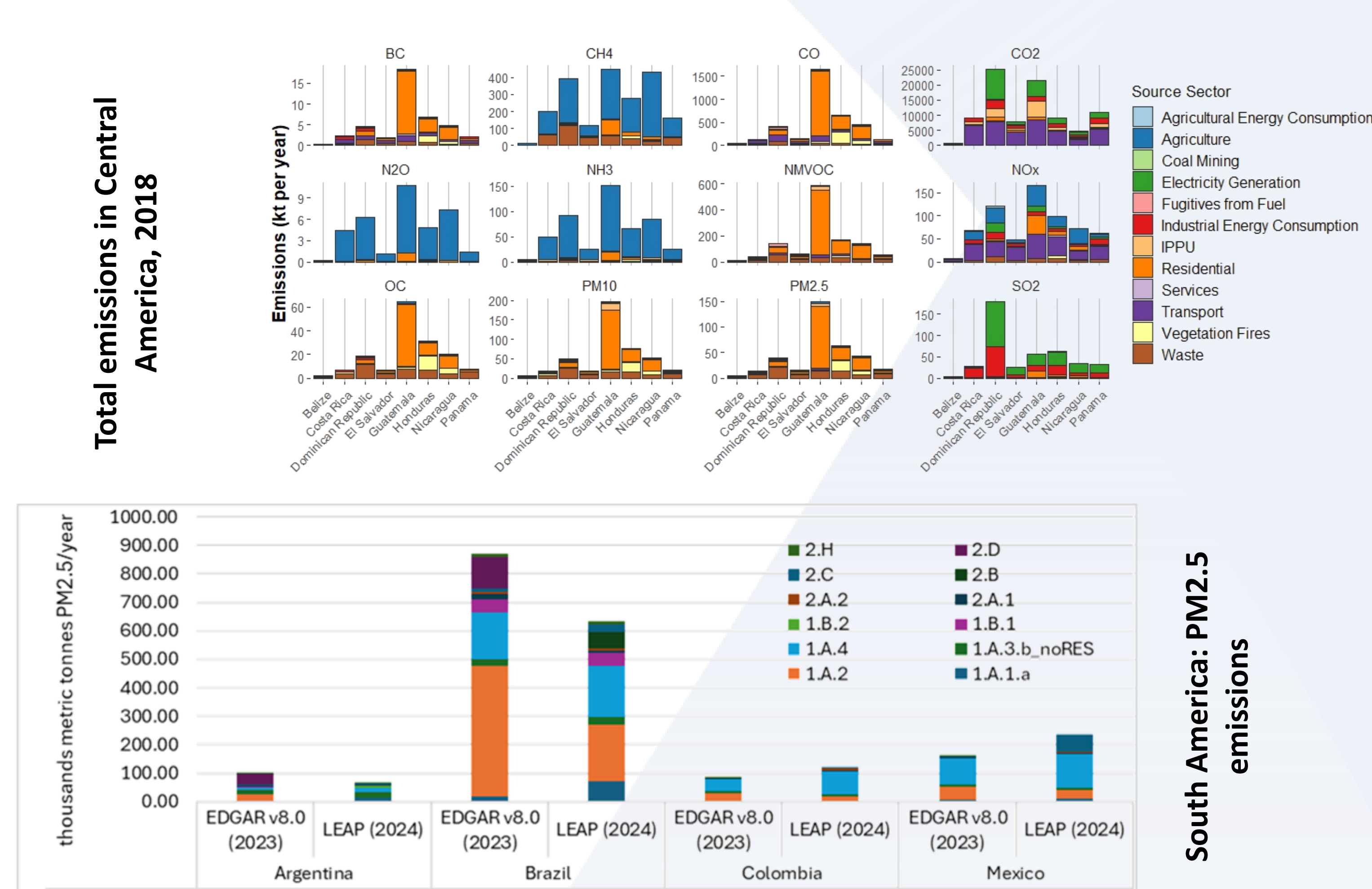
More info about FOCI project: @ProjectFOCI, Project-foci.eu, info@project-foci.eu

Overarching modelling framework used to develop the integrated SLCP, air pollutant, and GHG inventory.

- Why?**
- 1) Quantify emissions and understand key sources
 - 2) Quantify impacts of emissions
 - 3) Provide evidence base to influence decision makers
 - 4) Identify key measures which contribute the most to reducing emissions and can have the largest impacts

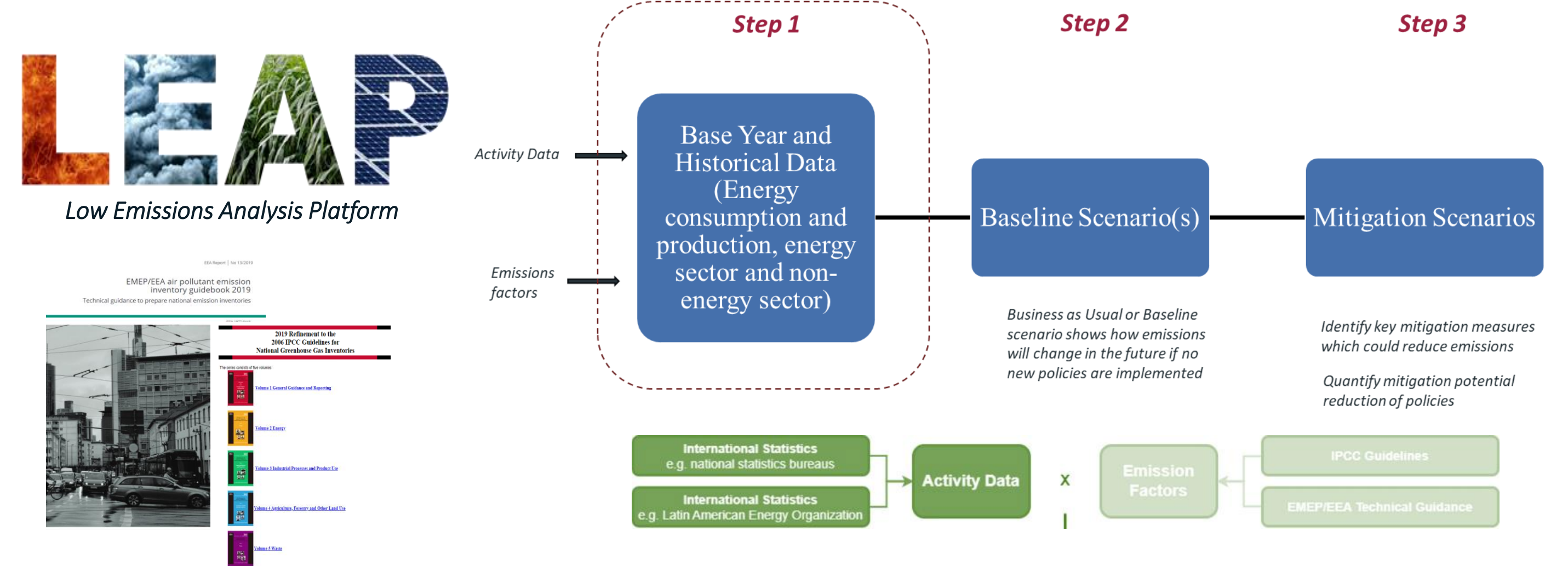


Emissions inventory – Summary and outlook



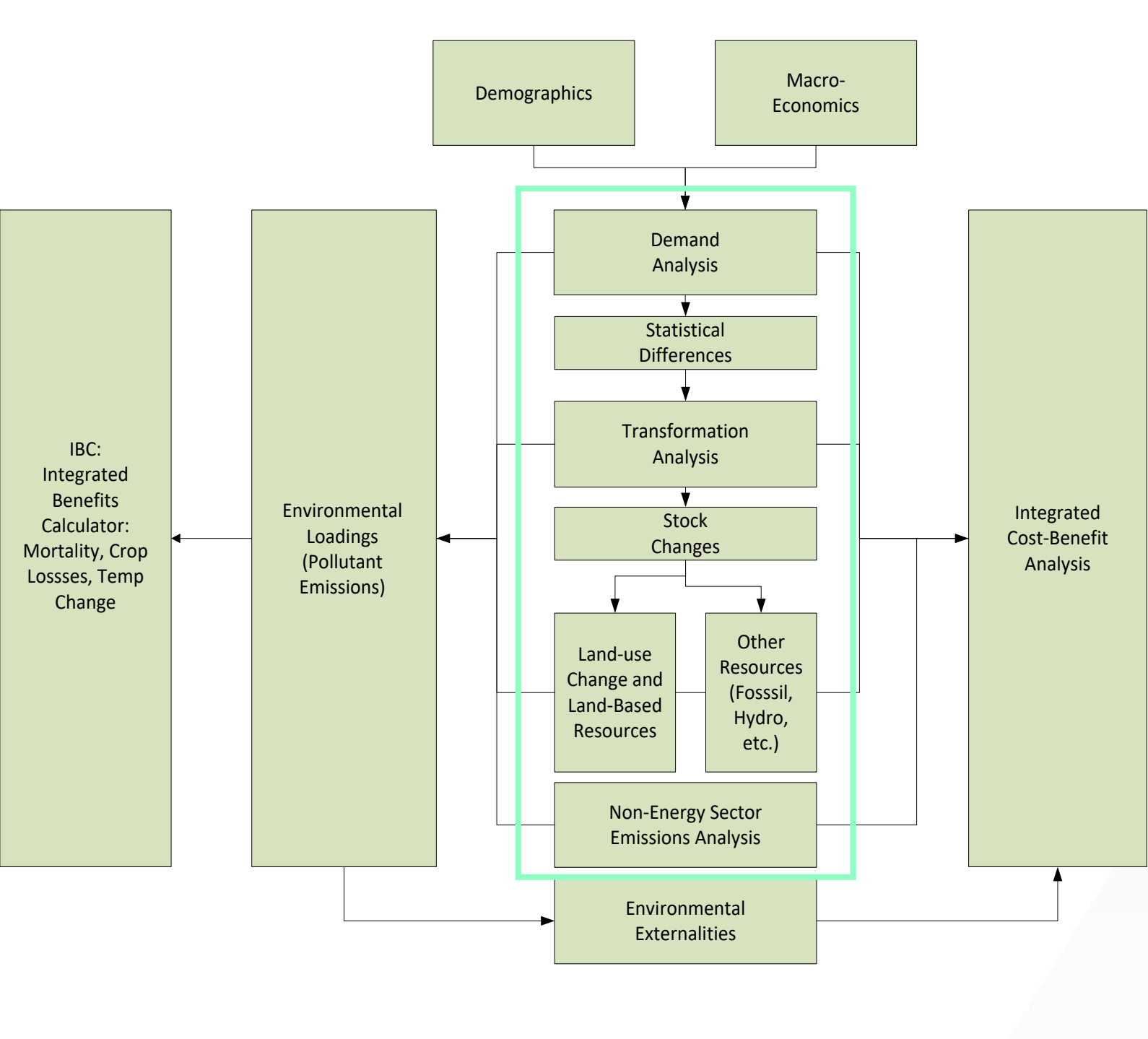
Tools for evidence-building

A. Developing a LEAP analysis



B. Modelling methods: schematic

- Searching for available data in **national/** regional/ global databases
- Setting up the inventory model using LEAP at national level (historical data per country).
- Developing methods for prioritized sectors (agriculture and waste)
- Identifying baseline and future scenarios → e.g. consistency with SSPs and policy mitigation (NDC, long-term agendas)
 - Implementing scenarios in LEAP, modelling policies & mitigation measures
- Spatially distribution of emissions
- Multiple benefits assessment (economics, health, ecosystems)



Key findings

- KF1: We developed a new integrated and harmonised anthropogenic emission inventory for Latin America using LEAP.**
- ✓ Emission sources were grouped according to the IPCC source categories and listed the source sector alongside the IPCC code for each emission source.
 - ✓ For both regions, the emission sources include all the major sources of SLCPs (black carbon, CH₄), air pollutants (NO_x, NMVOC, SO₂, NH₃, PM2.5 and PM10), and GHGs (CO₂, CH₄, N₂O).
- KF2: The model includes analysis of all key energy consuming and producing sectors, and non-energy.**
- ✓ This is a very useful and consistent source of data across the region, and this dataset also allows represent emissions from informal activities, such as the use of wood for heating and cooking in the residential sector.
 - ✓ By the end of the FOCI project, the underlying emission data will be *open access* to support decision makers, further studies, and policy measures in terms to reduce SLCPs and estimate the multiple benefits for the implementation of these actions.

Data availability statement
The datasets generated during and/or analysis during the current study are not publicly available due to restrictions during the project. Available by 2026 (end of the project).

Acknowledges (*)
This study was developed under the project FOCI - Non-CO₂ Forcers and Their Climate, Weather, Air Quality and Health Impacts (<https://www.project-foci.eu/wp/>), which was co-funded by European Union and the UKRI (UK Research and Innovation), Grant Number 101056783 – FOCI

Key references

- Castesana, P., Diaz Resquin, M., Huneueu, N., Puliafito, E., Darras, S., Gómez, D., Granier, C., Osses Alvarado, M., Rojas, N., & Dawidowski, L. (2022). PAPIA dataset: A regional emission inventory of reactive gases for South America based on the combination of local and global information. *Earth System Science Data*, 14(1), 271–293. <https://doi.org/10.5194/essd-14-271-2022>
- Heaps, C. G. (2023). LEAP: The Low Emissions Analysis Platform (2020.1.107) [Computer software]. Stockholm Environment Institute, Somerville, MA, USA. <https://leap.sei.org>.
- OLADE. (2023). Sistema de Información Energética para América Latina y el Caribe (sIELAC). Serie Oferta y Demanda [dataset]. <https://sielac.olade.org/>.
- Smith, S. J., McDuffie, E. E., & Charles, M. (2022). Opinion: Coordinated development of emission inventories for climate forcers and air pollutants. *Atmospheric Chemistry and Physics*, 22(19), 13201–13218. <https://doi.org/10.5194/acp-22-13201-2022>
- EIA. (2023). Global energy statistics [Xml]. <https://www.eia.gov/international/data/world>